

HPS102, 103, 154 series

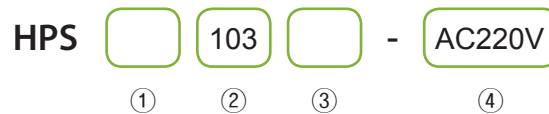


HPS 103

Symbol				
Electrical connection				
Nil	G	T	D	Z

Process Valve

How to Order



① Port type

Nil	Rc(PT) (Standard)
G	G

② Orifice & Port size

	Orifice	Port size
102	Ø10	1/4
103	Ø10	3/8
154	Ø15	1/2

③ Electrical connection

Nil	Console box (Standard)
G	Grommet coil
T	Terminal box
D	DIN coil + DIN connector
Z	DIN coil + DIN connector & lamp

④ Voltage

AC110V	AC110V 50Hz/60Hz
AC220V	AC220V 50Hz/60Hz
AC110V-50Hz	AC 110V 50Hz
AC220V-50Hz	AC 220V 50Hz
AC240V-50Hz	AC 240V 50Hz
AC24V-50Hz	AC 24V 50Hz

2Port Small

- HDA
- HDA G
- KAB
- HDA N.O

W, A (N.C)

- HDW
- HAW
- HPW

W, A (N.O)

- HVD
- HPW

Specifications

Classification	Standard	Option	Classification	Standard	Option
Fluid	Air, Steam, Hot water		Voltage	AC100V 50/60Hz	AC220V 50Hz
Fluid temp.	0 ~ 180 °C			AC110V 60Hz	AC240V 50Hz
Ambient temp.	50 °C (Max.)			AC200V 50/60Hz	AC 24V 50Hz
Pressure range	0.5 ~ 7kgf/cm ² (0.05 ~ 0.7MPa)		Allowable voltage fluctuation	±10% (AC)	
Coil insulation	Class H		Power consumption	AC: 14W	
Electrical connection	Lead wire	Grommet coil Terminal box DIN connector	Body material	Brass	
Port size	Rc(PT)1/4, 3/8, 1/2		Seal material	PTFE + SUS 304 PISTON	
Orifice	Ø10, Ø15		Weight	0.53kg , 0.77kg	

Features

- Piston pilot type
- Normally closed type
- Max temperature 180 °C
- Fire resistant structure, high durability

Applications

- Steam piping
- Washing machine
- Sterilizer
- Heating system
- Heat exchanger

S, H (NC)

- HDS
- HPS

S, H (NO)

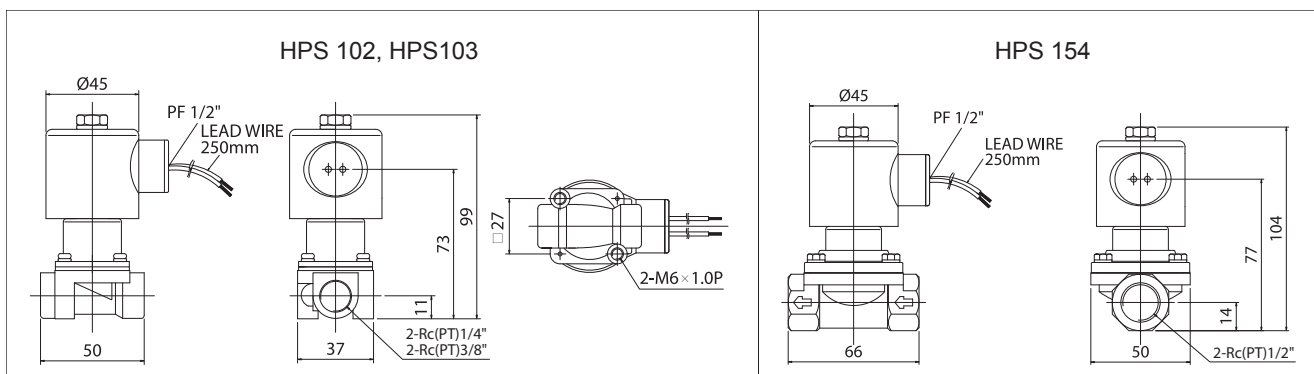
- HSV
- HPS

High Pressure

- HPW (20kgf/cm²)
- HPM (20kgf/cm²)
- HPW (60kgf/cm²)

※ Not available in explosive atmosphere.

Dimensions



Direct Acting

- HKW
- HKS

SUS Type

- HDA
- HDW
- HVS
- HSR
- HDC
- HPW

HPS206~5020 series



HPS 206

Symbol	
Electrical connection	
Nil	G T D Z

How to Order

HPS 206 - AC220V

① ② ③ ④

① Port type

Nil	Rc(PT) (Standard)
G	G

② Orifice & Port size

	Orifice	Port size
206	Ø20	3/4
2510	Ø25	1
3212	Ø32	1 1/4
4014	Ø40	1 1/2
5020	Ø50	2

③ Electrical connection

Nil	Console box (Standard)
G	Grommet coil
T	Terminal box
D	DIN coil + DIN connector
Z	DIN coil + DIN connector & lamp

④ Voltage

AC110V	AC110V 50Hz/60Hz
AC220V	AC220V 50Hz/60Hz
DC24V	DC24V
AC220V-50Hz	AC 220V 50Hz
AC240V-50Hz	AC 240V 50Hz
AC24V-50Hz	AC 24V 50Hz

Specifications

Classification	Standard	Option	Classification	Standard	Option
Fluid	Air, Steam, Hot water		Voltage	AC100V 50/60Hz AC110V 60Hz AC200V 50/60Hz AC220V 60Hz DC24V	AC220V 50Hz AC240V 50Hz AC 24V 50Hz
Fluid temp.	0 ~ 180 °C				
Ambient temp.	Max. 50 °C				
Pressure range	0.5 ~ 7kgf/cm ² (0.05 ~ 0.7MPa)		Allowable voltage fluctuation	±10%(AC), ±5% (DC)	
Coil insulation	Class H		Power consumption	AC, DC : 14W	
Electrical connection	Lead wire G(PF)1/2	Grommet coil Terminal box DIN connector	Body material	Brass	
Port size	Rc(PT) 3/4, 1, 1 1/4, 1 1/2, 2		Seal material	PTFE + SUS 304 PISTON	
Orifice	Ø20, Ø25, Ø32, Ø40, Ø50		Weight	Refer to the table below	

※ Not available in explosive atmosphere.

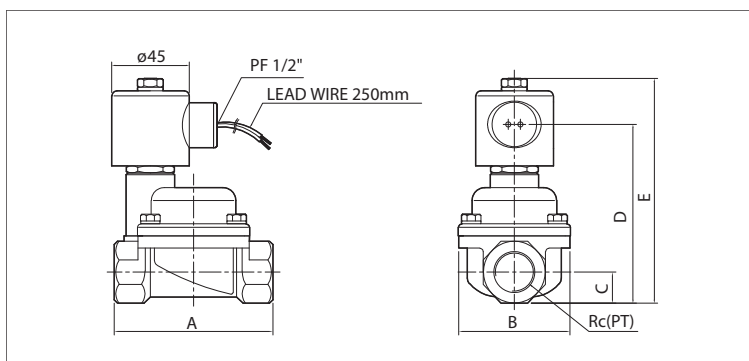
Feature

- Piston pilot type
- Normally closed
- High temperature(Max. 180 °C), large capacity
- Explosion proof, long service life

Application

- Steam pipes
- Dyeing machinery
- Heat exchangers
- Industrial cleaner
- Sterilizer

Dimensions



Model	A	B	C	D	E	Rc(PT)	Weight (kg)
HPS 206	92	64.5	18	104	130	3/4	1.55
HPS 2510	92	64.5	21	110	137	1	1.57
HPS 3212	122	86	26	131	157	1 1/4	2.55
HPS 4014	122	86	29	137	163	1 1/2	2.75
HPS 5020	140	100	36	154	180	2	3.92

Process Valve

2Port Small

HDA

HDA G

KAB

HDA N.O

Water,Air N.C

HDW

HAW

HPW

Water,Air N.O

HVD

HPW

Steam, Hot water N.C

HDS

HPS

Steam, Hot water NO

HSV

HPS

High Pressure

HPW (20kgf/cm²)

HPM (20kgf/cm²)

HPW (60kgf/cm²)

Direct Acting

HKW

HKS

SUS Type

HDA

HDW

HVS

HSR

HDC

HPW

HPS6524 series



HPS 6524

Symbol				
Electrical connection				
Nil	G	T	D	Z

How to Order

HPS 65 24 - AC220V

① ② ③ ④ ⑤

① Port type

Nil	Rc(PT) (Standard)
G	G

② Orifice

65	Ø65
----	-----

③ Port size

24	2 1/2
----	-------

④ Electrical connection

Nil	Console box (Standard)
G	Grommet coil
T	Terminal box
D	DIN coil + DIN connector
Z	DIN coil + DIN connector & lamp

⑤ Voltage

AC110V	AC110V 50Hz/60Hz
AC220V	AC220V 50Hz/60Hz
DC24V	DC24V
AC110V-50Hz	AC 110V 50Hz
AC220V-50Hz	AC 220V 50Hz
AC240V-50Hz	AC 240V 50Hz
AC24V-50Hz	AC 24V 50Hz

Specifications

Classification	Standard	Option	Classification	Standard	Option
Fluid	Air, Steam, Hot water		Voltage	AC100V 50/60Hz	AC220V 50Hz AC240V 50Hz AC 24V 50Hz
Fluid temp.	0 ~ 180℃			AC110V 60Hz	
Ambient temp.	50℃ (Max.)			AC200V 50/60Hz AC220V 60Hz DC24V	
Pressure range	0.5 ~ 7kgf/cm ² (0.05 ~ 0.7MPa)		Allowable voltage fluctuation	±10%(AC), ±5% (DC)	
Coil insulation	Class H		Power consumption	AC, DC : 14W	
Electrical connection	Lead wire	Grommet coil Terminal box DIN connector	Body material	Bronze	
				Port size	Rc(PT) 2 1/2
Orifice	Ø65		Seal material	PTFE + SUS 304 PISTON	
			Weight	8.3kg	

* Not available in explosive atmosphere.

Features

- Piston pilot type
- Normally closed type
- Max temperature 180℃
- Fire resistant structure, high durability

Applications

- Steam piping
- Industrial cleaner
- Sterilizer
- Ventilator
- Steam presser
- Heat exchanger

Dimensions

