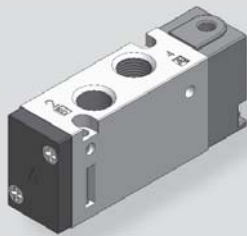
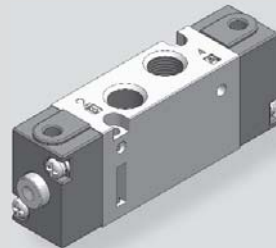


KA(B)V210 series



KBV210S



KBV210D

Pneumatic Solenoid Valve

KS3135

KS4000

KSP3135

KSP4000

KT307
KMF307

KT317

KA(B)V105

KA(B)V210

KA(B)V320

KA(B)V530

KA(B)V640

KA(B)V524

KA(B)V534

KA(B)V341

KA(B)V342

KPA(B)542

How to Order

K B V 210 S

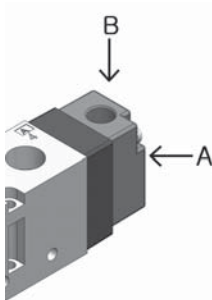
① ② ③

① Air supply direction

B	Vertical (Standard)
A	Horizontal (Under development)

② Port type

Nil	Rc(PT) (Standard)
G	G



③ Function

	Function	Symbol
S	Single Acting	
D	Double Acting	

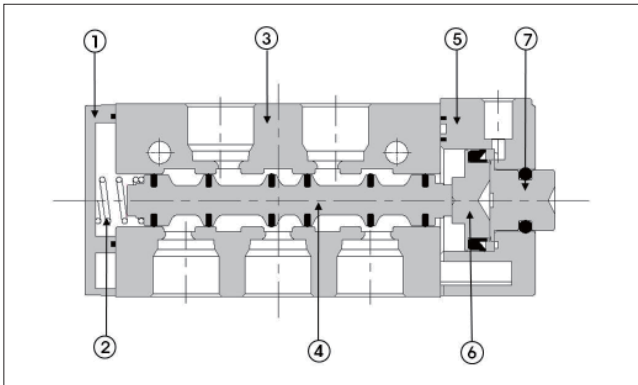
Specifications

Type	S	D
Fluid	Air, Inert gas	
Port size	Rc(PT) 1/8, G 1/8	
External pilot port size	M5	
Effective sectional area Smm ² (Cv)	12.6mm ² (0.6)	
Operating pressure	1.5~9kgf/cm ² (0.15~0.9MPa)	
Pilot pressure	2~10kgf/cm ² (0.2~1MPa)	
Max. operating frequency	5 cycle/sec	
Ambient & fluid temperature	5°C ~ 60°C	
Weight	100g	120g

Features

- Excellent durability with its non-lubricated type.
- Easy to mount and to maintain with its light weight and small size.
- Fast response with its low pressure pilot.
- Easy to install if horizontal type(KAV) or vertical type(KBV) is selected depending on installation direction.

Structure



Part no.	Parts	Material
1	Cover	Metal
2	Spool Spring	SUS
3	Body	AL D/C
4	Spool Ass'y	AL & Others
5	Adapter Plate	Metal
6	Piston	Plastic Resin
7	Button	Metal

Dimensions

