

KBG-B20~ B22 series



How to Order

KBG - B20 18 -

① ② ③ ④

① End fitting type

B20	Metal ball socket
B21	Penetration hinge (ø8X10T)
B22	Plastic ball socket

② Cylinder outer dia.

15	ø15
18	ø18
22	ø22
27.4	ø27.4

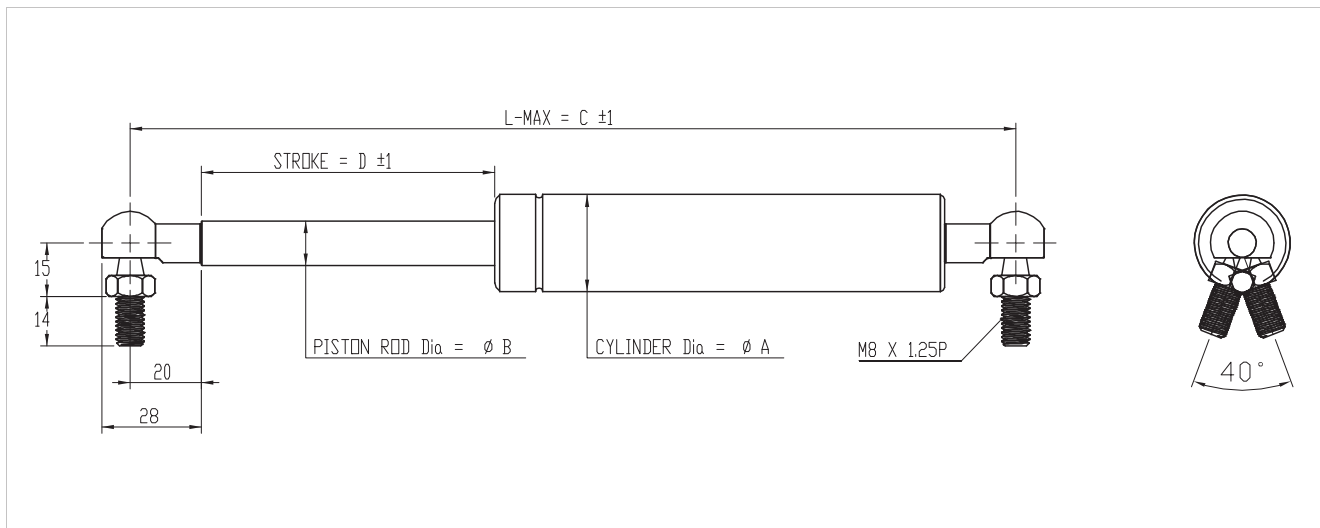
③ Max. length

Refer to specifications according to end fitting

④ Force

Refer to specifications according to end fitting

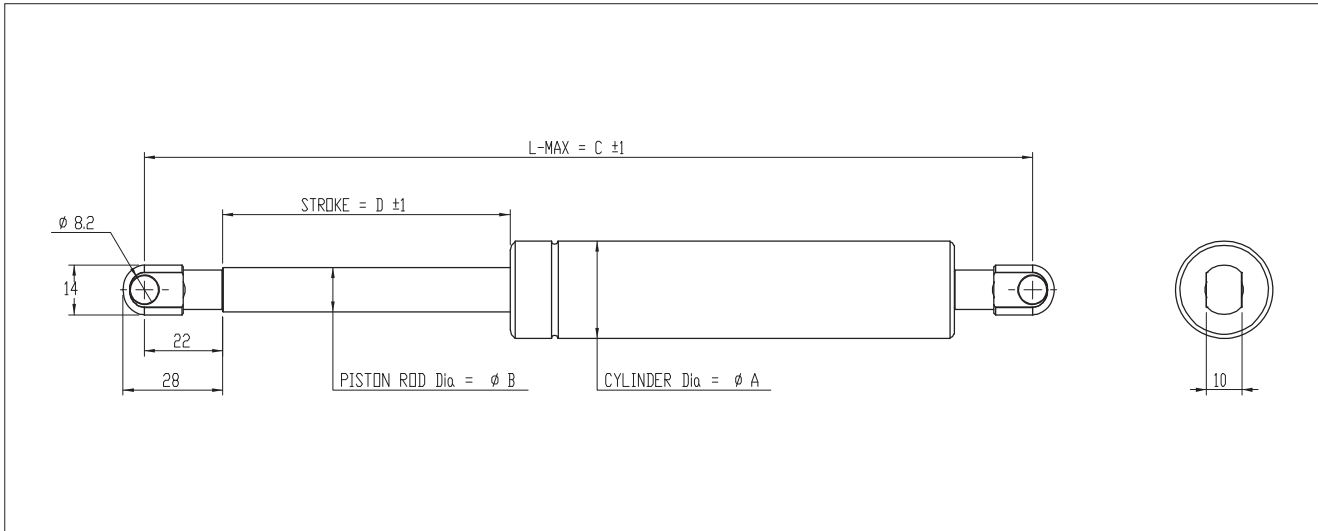
Dimensions-B20 (Metal Ball Socket)



Unit:mm

Cylinder dia. ØA	Piston rod dia. ØB	L-Max (C)	Stroke (D)	Force kgf	Calculation method
ø18	ø8	180~800	48~358	5~50	Max. length = (Stroke+42) X2~800 Stroke = 48~Max. length/2-42
ø22	ø10			10~100	
ø27.4	ø12.5			10~120	

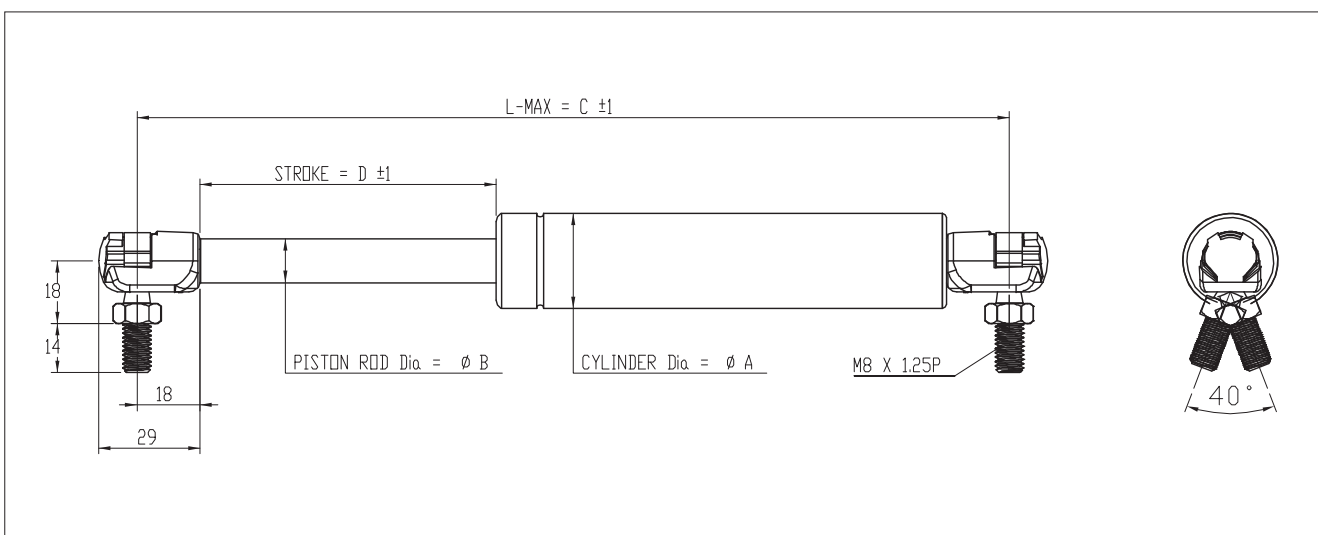
Dimensions-B21 (Penetration Hinge (Ø8x10T))



Unit:mm

Cylinder dia. ØA	Piston rod dia. ØB	L-Max (C)	Stroke (D)	Force kgf	Calculation method
Ø18	Ø8	180~800	46~356	5~50	Max. length = (Stroke+44) X2~800 Stroke = 46-Max. length/2-44
Ø22	Ø10			10~100	
Ø27.4	Ø12.5			10~120	

Dimensions-B22 (Plastic Ball Socket)



Unit:mm

Cylinder dia. ØA	Piston rod dia. ØB	L-Max (C)	Stroke (D)	Force kgf	Calculation method
Ø18	Ø8	180~800	50~360	5~50	Max. length = (Stroke+40) X2~800 Stroke = 50-Max. length/2-40
Ø22	Ø10			10~80	
Ø27.4	Ø12.5			10~80	

KBG-W10~ W20 series



- Shock Absorber & Gas Spring
- Shock Absorber Reference data
- KPA KUPA
- KSCA
- KCSC
- Gas Spring Reference data
- KBG-W
- KBG-B

How to Order



① End fitting type

W10	Straight (ø6 X 3T)
W20	Straight (ø8 X 3T)
W30	Straight (ø6 X 5T)
W40	U Type (ø10)
W50	L Type (ø8 X10T)

② Cylinder outer dia.

15	Ø15
18	Ø18
22	Ø22
27.4	Ø27.4

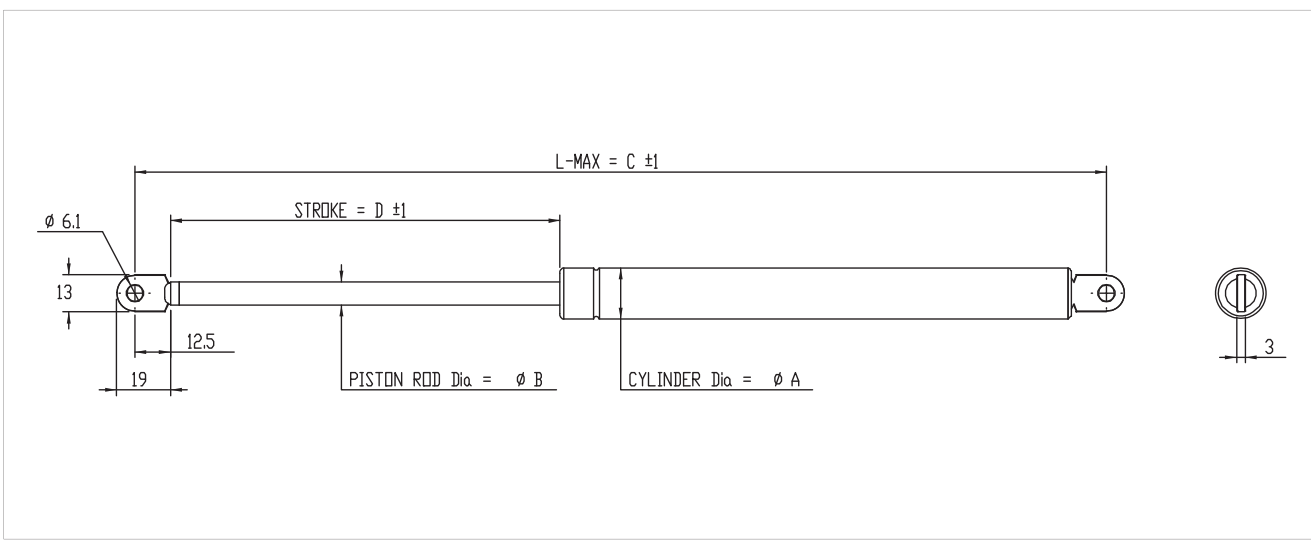
③ Max. length

Refer to specifications according to end fitting

④ Force

Refer to specifications according to end fitting

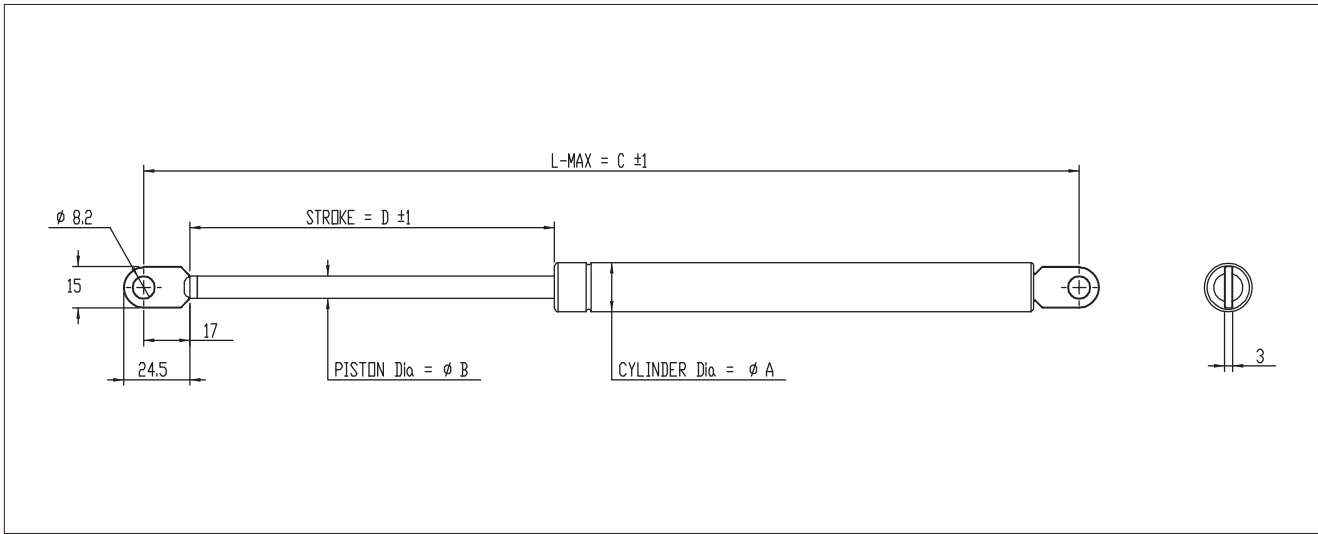
Dimensions-W10 (Straight Bracket(Ø6x3T))



Unit:mm

Cylinder dia. ØA	Piston rod dia. ØB	L-Max (C)	Stroke (D)	Force kgf	Calculation method
Ø15	Ø6	160~500	52~222	3~30	Max. length = (Stroke+28) X2~500 Stroke = 52~Max. length/2-28
Ø18	Ø8	160~800	46~366	5~30	Max. length = (Stroke+34) X2~800 Stroke = 46~Max. length/2-34

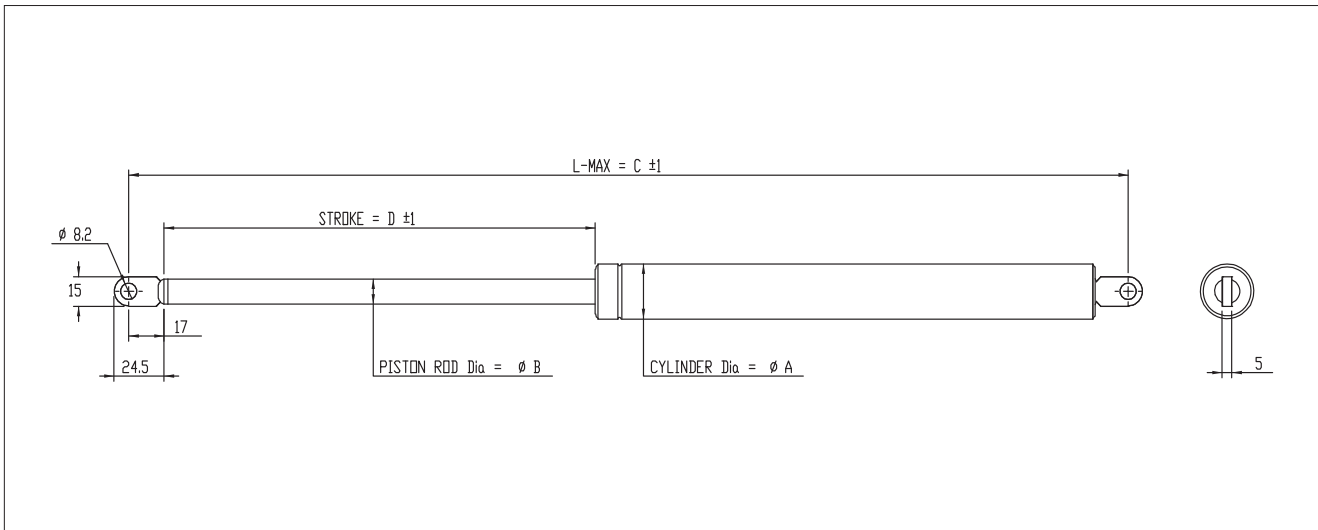
Dimensions-W20 (Straight Bracket(Ø8×3T))



Unit:mm

Cylinder dia. ØA	Piston rod dia. ØB	L-Max (C)	Stroke (D)	Force kgf	Calculation method
Ø15	Ø6	180~510	57~222	3~30	Max. length = (Stroke+33) X2-510 Stroke = 57~Max. length/2-33
Ø18	Ø8	180~800	51~361	5~30	Max. length = (Stroke+39) X2-800 Stroke = 51~Max. length/2-39

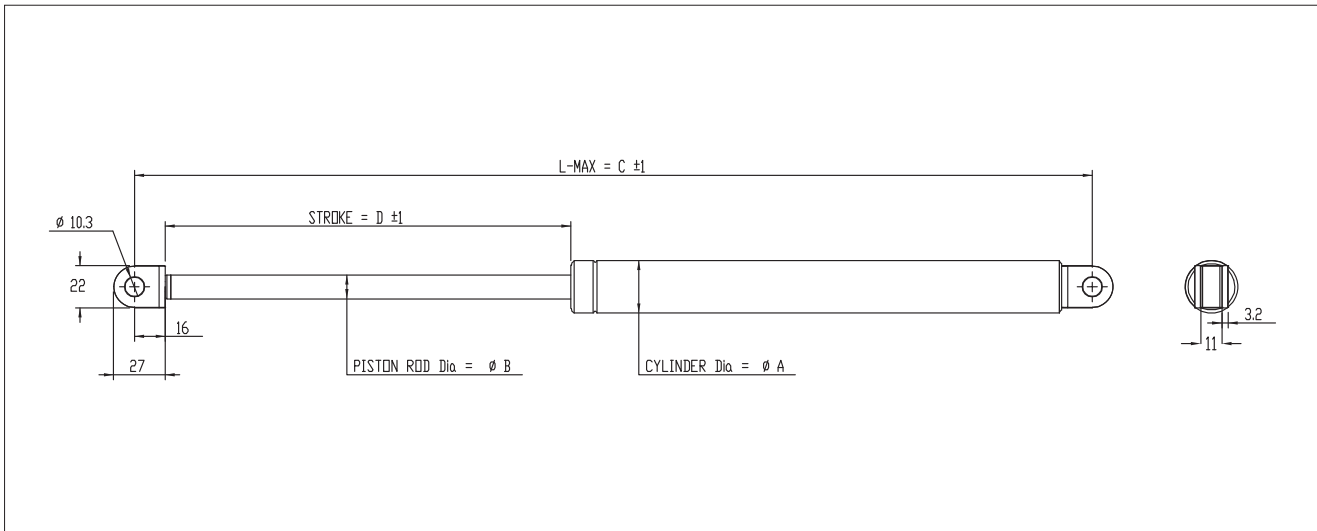
Dimensions-W30 (Straight Bracket(Ø8×5T))



Unit:mm

Cylinder dia. ØA	Piston rod dia. ØB	L-Max (C)	Stroke (D)	Force kgf	Calculation method
Ø18	Ø8	180~800	51~361	5~50	Max. length = (Stroke+39) X2-800 Stroke = 51~Max. length/2-39
Ø22	Ø10			10~80	
Ø27.4	Ø12.5			10~100	

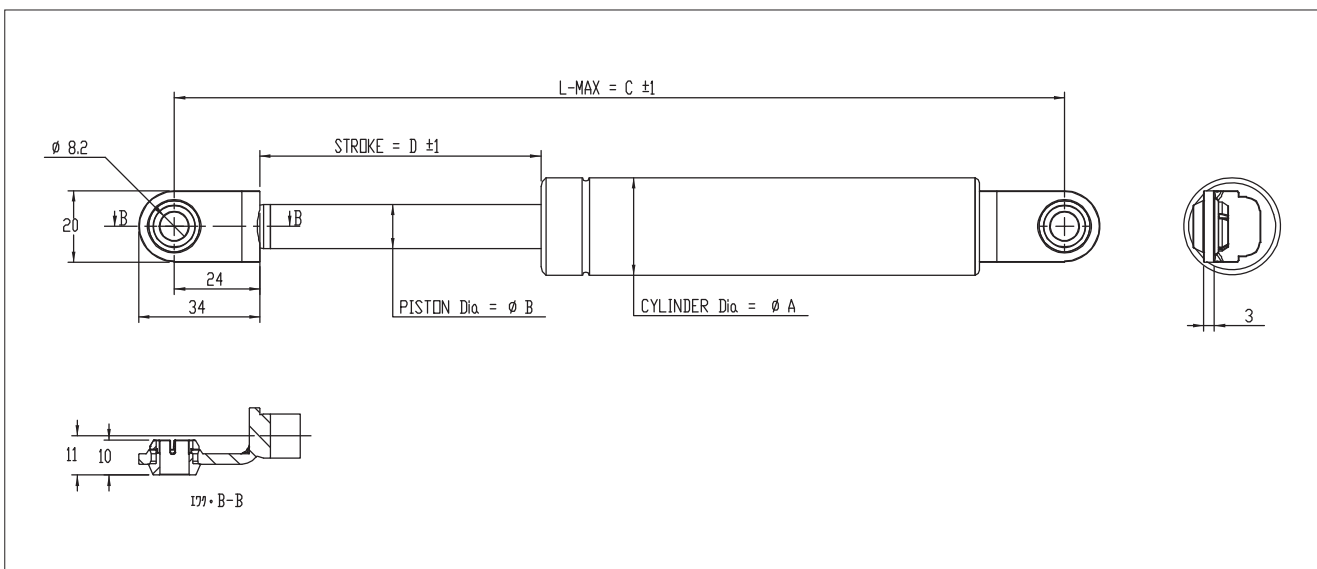
Dimensions-W40 (U Type Bracket (Ø10))



Unit:mm

Cylinder dia. ØA	Piston rod dia. ØB	L-Max (C)	Stroke (D)	Force kgf	Calculation method
Ø22	Ø10	180~800	52~362	10~100	Max. length = (Stroke+38) X2-800 Stroke = 52~Max. length/2-38
Ø27.4	Ø12.5			10~120	

Dimensions-W50 (L Type Bracket (Ø8x5T))



Unit:mm

Cylinder dia. ØA	Piston rod dia. ØB	L-Max (C)	Stroke (D)	Force kgf	Calculation method
Ø18	Ø8	200~800	54~354	5~50	Max. length = (Stroke+46) X2-800 Stroke = 54~Max. length/2-46
Ø22	Ø10			10~100	
Ø27.4	Ø12.5			10~120	