

Precision Regulator (SRP)

SRP2000~3000 Series



SRP 2000



SRP 3000

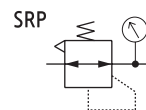
How to order

SRP 20 00 - 02 BG

- Precision Regulator
- Body Size**
 - 20 - 1/4
 - 30 - 3/8
- Regulating pressure range**
 - 00 - 0.2~8 bar
 - 20 - 0.1~2 bar
 - 40 - 0.1~4 bar
- Thread type**
 - Nil - Rc(PT)
 - N - NPT
 - G - G(PF)
- Port Size**

Symbol	Size	Body size	
		20	30
02	1/4	●	
03	3/8		●
04	1/2		●
- Accessory(Optional)**
 - Nil - None Bracket / None Gauge
 - B - Bracket
 - G - Precision Gauge

Symbol



Specification

Fluid		Compressed Air
Max. operating pressure		10bar (1.0MPa)
Min. supply ¹⁾ pressure	SRP2000	Set pressure +0.5bar
	SRP3000	Set pressure +1bar
Regulating range		0.2~8bar (0.02~0.8MPa)
		0.1~4bar (0.01~0.4MPa)
		0.1~2bar (0.01~0.2MPa)
Sensitivity		Within 0.2% of full span
Repeatability		Within ±0.5% of full span
Air consumption ²⁾ (At supply pressure of 10bar)	SRP2000	5 L/min
	SRP3000	11 L/min
Ambient and fluid temperature		-5~60°C (No freezing)
Gauge port		1/8
Port size	SRP2000	1/4
	SRP3000	3/8, 1/2

Note : 1. With the condition of no flow on the output side.

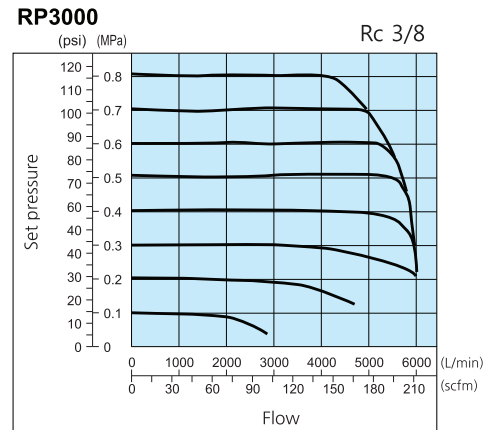
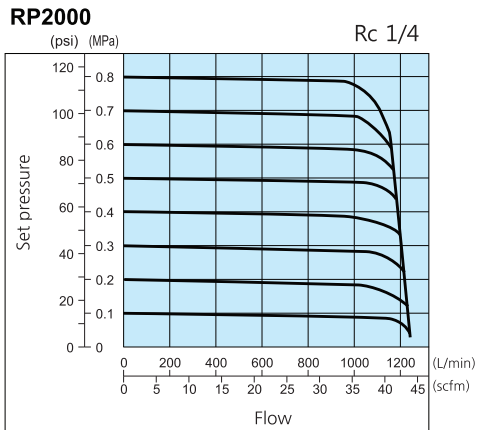
2. Air is normally being discharged to the atmosphere from a bleed hole or an exhaust port.

Precautions

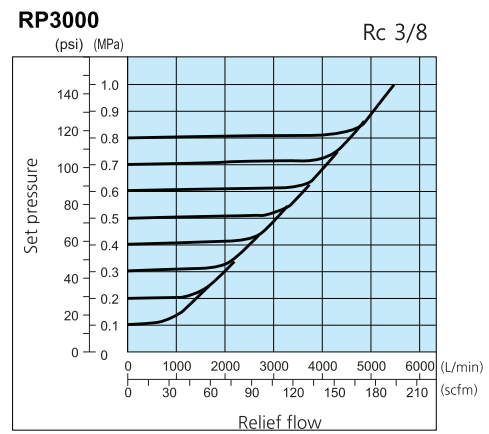
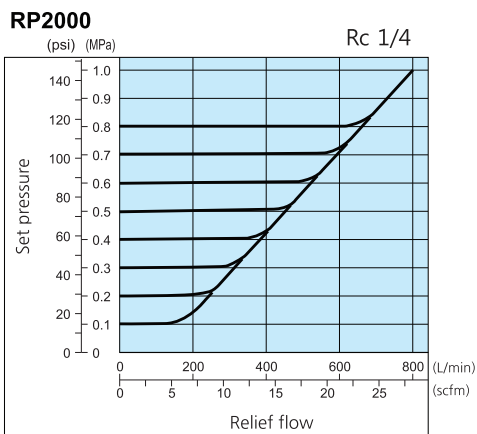
- If the supply pressure line contains drainage, particulate, or other debris, the fixed throttle can become clogged leading to malfunction. To avoid malfunctions, in addition to an air filter (Series SAF), installation of a mist separator (Series SAM, SAFM) is required.
- If the drain removal from air filter and mist separator is missed, drain will be flown out to the outlet side and may result in a malfunction of the pneumatic equipment. When removing drain is difficult, use of a filter with an autodrain is recommended.
- Never use a lubricator on the supply side of the regulator, as this will positively cause the fixed throttle to become clogged and result in a malfunction. If lubrication is required for terminal devices, connect a lubricator on the output side of the regulator.
- If a directional switching valve (solenoid valve, mechanical valve, etc.) is mounted on the supply side of the regulator and repeatedly switched ON and OFF, wear of the nozzle/flapper section will be accelerated and a discrepancy in the setting value may occur. Therefore, avoid using a directional switching valve on the supply side. In the event a directional switching valve will be used, install it on the output side of the regulator.
- Air is normally released from the bleed hole (the hole on the side of the body's mid-section). This is a necessary consumption of air based on the construction of the precision regulator, and is not an abnormality.

Series SRP2000~3000

FLOW CHARACTERISTICS Supply pressure : 1MPa



RELIEF CHARACTERISTICS Back pressure : 1MPa



PRESSURE CHARACTERISTICS Supply pressure: 0.7 MPa, Set pressure: 0.2 MPa, Flow rate: 0 L/min (ANR)

