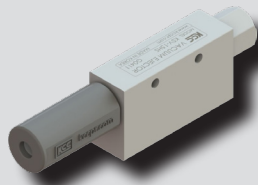
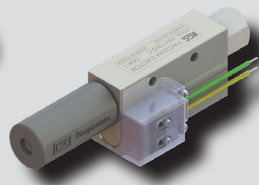


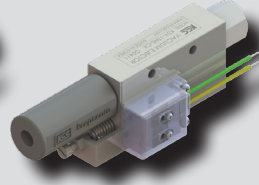
# KSV series



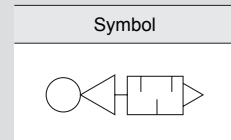
KSV-15HS



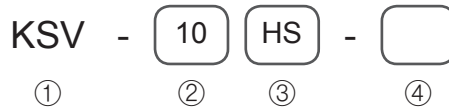
KSV-15HS-C



KSV-15HS-CK



## How to Order



① Series

KSV	Vacuum ejector
-----	----------------

② Nozzle diameter

5	Ø0.5	15	Ø1.5
10	Ø1.0	20	Ø2.0
25	Ø2.5	30	Ø3.0

③ Degree of vacuum

HS	≥ -86.6kPa	LS	≥ -53.3kPa
----	------------	----	------------

④ Vacuum switch

Nil	None	CK	Adjustable
C	Fixed		

※ KSV25 / 30 is not available for switch type.

## Specifications

Fluid	Air
Ambient temperature	0 ~ 60 °C
Lubrication	Not required
Working pressure	1.0 ~ 9.9kgf/cm <sup>2</sup> (0.1 ~ 0.99MPa)
Vacuum switch	Nil: None, C: Fixed type, CK: Adjustable type

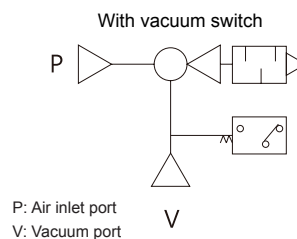
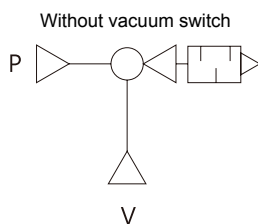
## Vacuum switch

Vacuum switch	C Fixed setting value	CK Fixed setting value
Setting range	-53kPa (-400mmHg)	-20~-53kPa (-400mmHg)
Factory setting value	-53kPa (-400mmHg)	-46.6kPa (-300mmHg)
Operation accuracy	±5.3kPa (±40mmHg)	
Differential pressure	4.0 ~ 13.3kPa (30 ~ 100mmHg)	
Rated current	AC 125V : 5A, AC 250V : 3A	

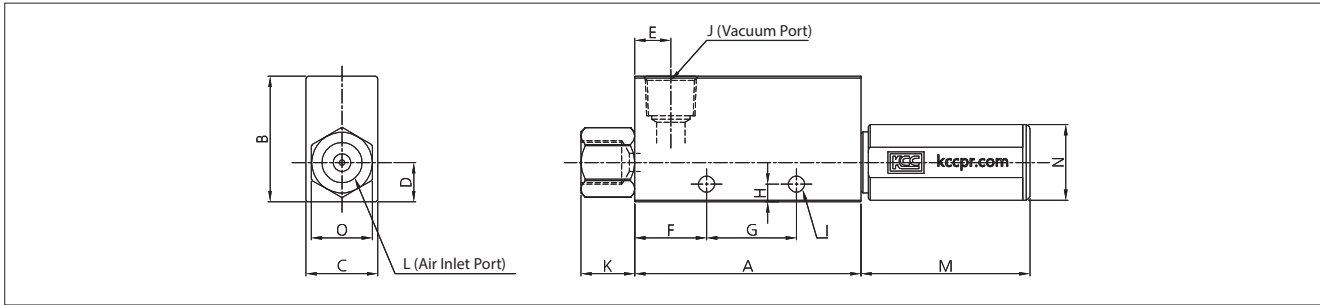
## Vacuum Performance Table

Model		Nozzle	Suction capacity	Max. vacuum pressure	Air consumption	Pressure supply
		mm	ℓ/min(ANR)	-kPa	ℓ/min(ANR)	MPa
KSV-05	HS	0.5	6	86.6	13	0.5
	LS	0.5	6	86.6	13	0.5
KSV-10	HS	1.0	27	91.8	44	0.5
	LS	1.0	36	57.2	44	0.5
KSV-15	HS	1.5	63	91.8	100	0.5
	LS	1.5	95	57.2	100	0.5
KSV-20	HS	2.0	110	91.8	180	0.5
	LS	2.0	165	57.2	180	0.5
KSV-25	HS	2.5	160	91.8	265	0.5
	LS	2.5	250	57.2	265	0.5
KSV-30	HS	3.0	225	91.8	385	0.5
	LS	3.0	350	57.2	385	0.5

## Pneumatic Circuit Diagram



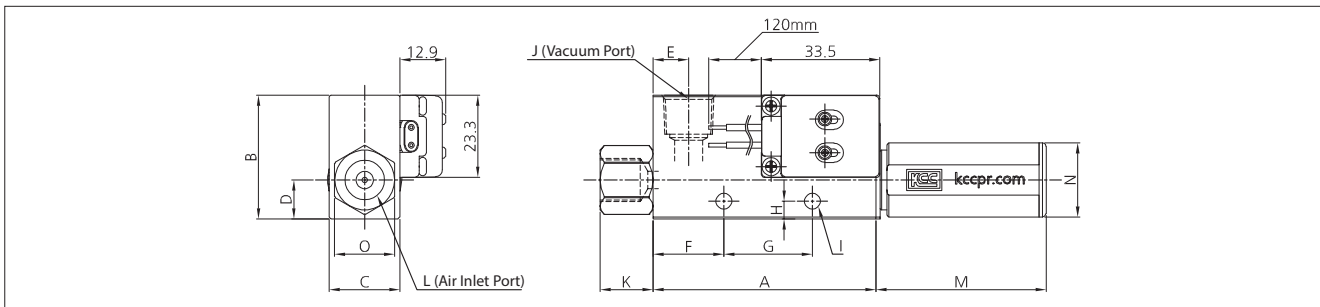
**Dimensions-Standard**



Unit:mm

Model	A	B	C	D	E	F	G	H	I	J	K	L	M	N	O
05HS	45	33	16	10	8	14	20	4.5	2-Ø4.2	Rc(PT) 1/8	10	Rc(PT) 1/8	35.1	Ø16	13
10HS/LS	45	33	16	10	8	14	20	4.5	2-Ø4.2	Rc(PT) 1/8	10	Rc(PT) 1/8	35.1	Ø16	13
15HS/LS	63	35	20	11	10	20	25	5	2-Ø4.5	Rc(PT) 1/4	15	Rc(PT) 1/4	48.1	Ø21	17
20HS/LS	85	40	25	15	13	28	32	7	2-Ø6	Rc(PT) 3/8	20	Rc(PT) 1/4	66	Ø25	22
25HS/LS	100	60	40	20	16	20	50	5.5	2-Ø6	Rc(PT) 1/2	17	Rc(PT) 3/8	96	Ø40	28
30HS/LS	118	60	40	20	20	33	50	5.5	2-Ø6	Rc(PT) 3/4	20	Rc(PT) 1/2	96	Ø40	30

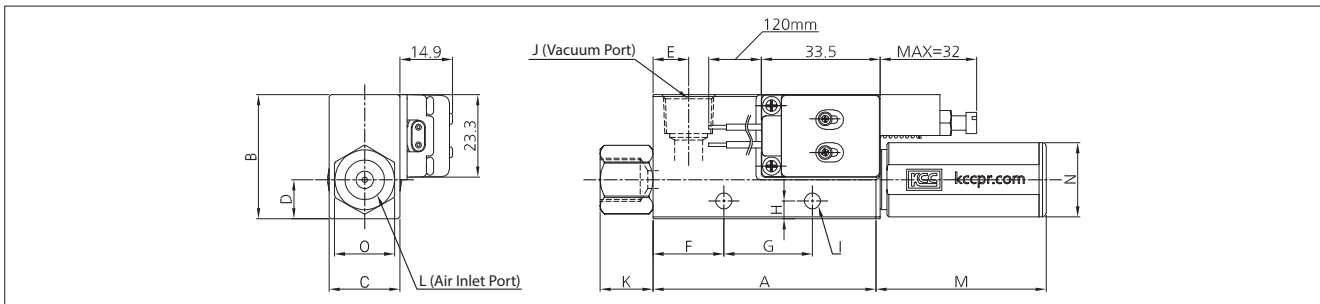
**Dimensions-Fixed Type (C)**



Unit:mm

Model	A	B	C	D	E	F	G	H	I	J	K	L	M	N	O
05HS C	45	33	16	10	8	14	20	4.5	2-Ø4.2	Rc(PT) 1/8	10	Rc(PT) 1/8	35.1	Ø16	13
10HS/LS C	45	33	16	10	8	14	20	4.5	2-Ø4.2	Rc(PT) 1/8	10	Rc(PT) 1/8	35.1	Ø16	13
15HS/LS C	63	35	20	11	10	20	25	5	2-Ø4.5	Rc(PT) 1/4	15	Rc(PT) 1/4	48.1	Ø21	17
20HS/LS C	85	40	25	15	13	28	32	7	2-Ø6	Rc(PT) 3/8	20	Rc(PT) 1/4	66	Ø25	22

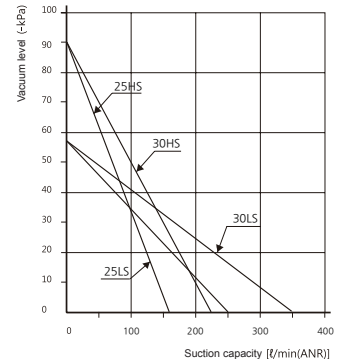
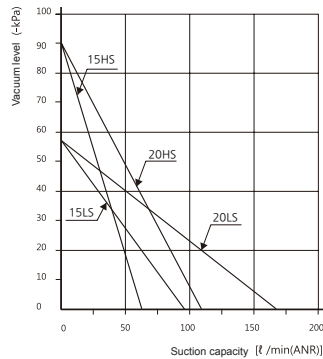
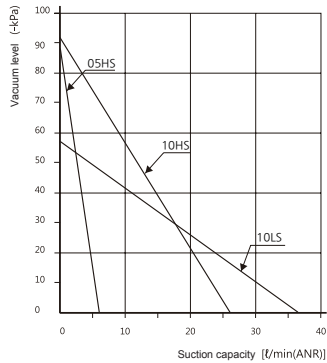
**Dimensions-Adjustable Type (CK)**



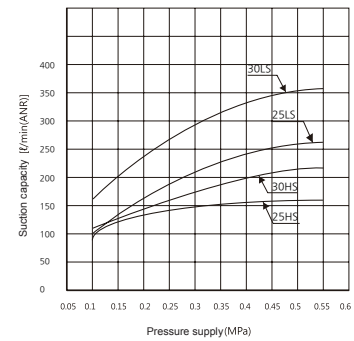
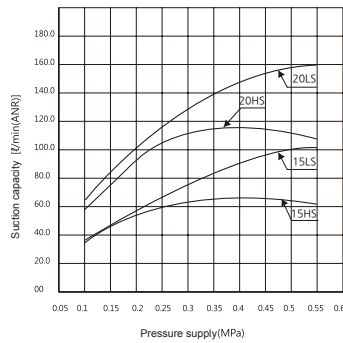
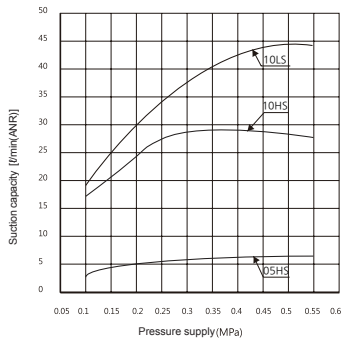
Unit:mm

Model	A	B	C	D	E	F	G	H	I	J	K	L	M	N	O
05HS CK	45	33	16	10	8	14	20	4.5	2-Ø4.2	Rc(PT) 1/8	10	Rc(PT) 1/8	35.1	Ø16	13
10HS/LS CK	45	33	16	10	8	14	20	4.5	2-Ø4.2	Rc(PT) 1/8	10	Rc(PT) 1/8	35.1	Ø16	13
15HS/LS CK	63	35	20	11	10	20	25	5	2-Ø4.5	Rc(PT) 1/4	15	Rc(PT) 1/4	48.1	Ø21	17
20HS/LS CK	85	40	25	15	13	28	32	7	2-Ø6	Rc(PT) 3/8	20	Rc(PT) 1/4	66	Ø25	22

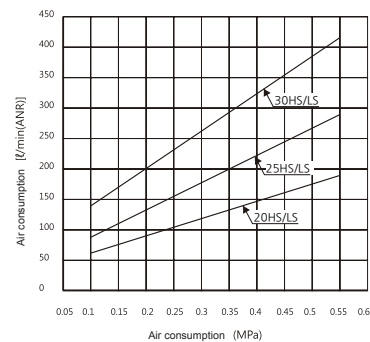
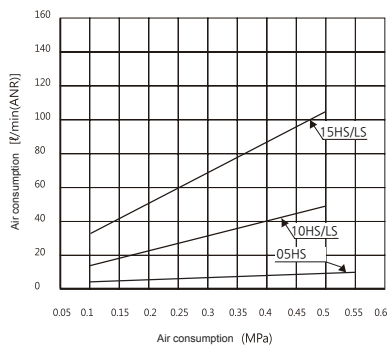
### Back Pressure Characteristic



### Suction Capacity



### Air Consumption



### Degree of Vacuum

